

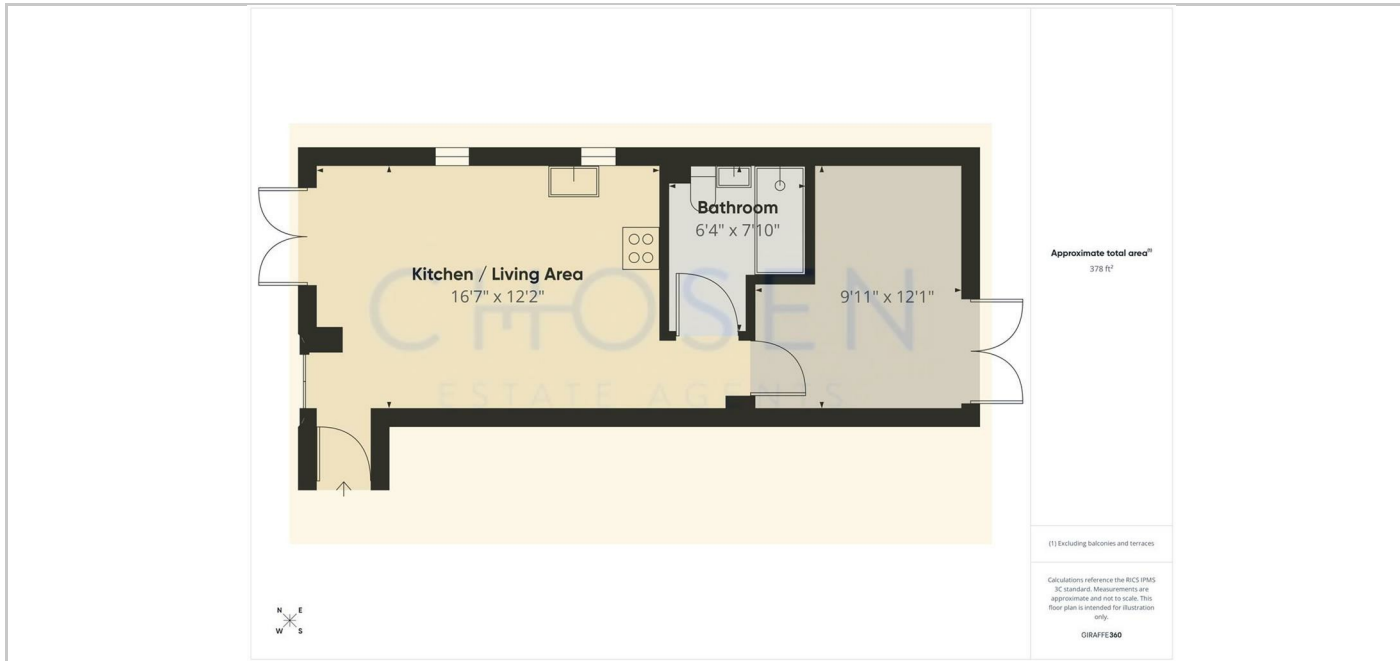
Flat 2, Hanover Place Hanover Street, Cheltenham, GL50 4GY

£900 Per Month

FOR SALE

CHOSEN
ESTATE AGENTS

- Available Now
- Appliances supplied
- Allocated Parking for One Car
- Walking Distance of Town Centre
- Gas Central Heating
- One Double Bedroom
- Outside Courtyard
- Newly Fitted Shower room
- Council Tax Band A
- Double Glazed



Directions

THE PROPERTY

Chosen Estate Agents have a fantastic opportunity to rent this spacious one double bedroom ground floor apartment which is PET FRIENDLY and within easy walking distance of the centre of Cheltenham.

It offers secure door entry, lounge with open plan kitchen, to include oven & hob, washing machine and oven and fridge freezer., newly fitted modern bathroom with shower and a double bedroom.

There is also an outside area which can be accessed via the French doors from the master bedroom.

The property is warmed via gas central heating and is double glazed throughout.

Parking for 1 car in an allocated parking space. One small pet will be allowed £50

Holding Deposit: £207.00 based on 1 weeks' rent of asking price

Security Deposit: £1038.00 based on 5 weeks' rent of asking price

Council Tax band: A Local Authority: Cheltenham

EPC Band: C

Electricity supply: Mains Gas Supply: Mains Water supply: Mains Sewerage: Mains

Heating: Electric Heating Mobile phone coverage: i.e EE, Vodafone, Three, O2

If satisfactory references are not obtained or you withdraw your application any financial loss to Chosen Estate Agents or the Landlord will be deducted from your holding deposit. If you or your guarantor provides information that is inaccurate, false, incomplete, or adverse credit not being disclosed then we may retain your holding deposit and reject your application.

SITUATION

2 Church Road, Churchdown, Gloucestershire, GL3 2ER

Tel: 01452 857421 Email: info@chosenestateagents.co.uk www.chosenestateagents.co.uk